

**SCHLAM** 

# BARRACUDA BUCKET CATALOGUE

THE GLOBAL LEADER IN LOAD  
AND HAUL ATTACHMENTS



# MINING BUCKETS MANUFACTURED LOCALLY SUPPLIED GLOBALLY

## UNLOCKING THE FULL POTENTIAL OF YOUR LOAD AND HAUL OPERATIONS

Just like our market-leading mining truck beds, our Barracuda loading attachment range offers exceptional quality.

OEM endorsed, and tailored for site specific application, providing the best solution to meet the unique demands of the Mining Industry.

Designed by our engineering team, we can customise our loading attachments to meet your specific site requirements and offer highly innovative options like our two-piece Barracuda T2 alongside the traditional loading attachments for 100 to 600 tonne excavators and loaders.

Since we manufacture locally, our lead times are minimal, our DIFOT rates are the best in the industry, and our dedicated product life-cycle care and refurbishment expertise means we provide total care for the entire life of the asset.



# BARRACUDA BENEFITS

## REDUCED MAINTENANCE

DESIGNED TO OPTIMISE MAINTENANCE REQUIREMENTS ONSITE

---

MODULAR CONFIGURATION, MAKING REPAIRS EASIER AND MORE COST-EFFECTIVE

---

## FULLY CUSTOMISED

ADAPTABLE CONFIGURATION FOR CUSTOMER SPECIFIC G.E.T. SOLUTIONS

---

CUSTOM DESIGNS TO ENSURE IMPROVED PENETRATION AND MATERIAL FLOW, REDUCING LOADING CYCLE TIMES AND ENHANCING FUEL EFFICIENCY

---

## INCREASED PRODUCTIVITY

DESIGNED TO MAXIMISE PAYLOAD WHILST BALANCING WEIGHT TO SUIT MACHINE CAPABILITIES (RSL)

---

BUCKET PROFILES DESIGNED FOR SITE-SPECIFIC MATERIALS IMPROVING PENETRATION FOR FASTER FILLING AND QUICKER CYCLES

---

## REDUCED TOTAL COST OF OWNERSHIP

COMPETITIVE ENTRY COST WITHOUT COMPROMISING VALUE

---

DESIGNED TO MAXIMISE PRODUCTIVITY WHILE REDUCING MAINTENANCE REQUIREMENTS, MACHINE DOWNTIME AND TOTAL COST

---

BARRACUDA BUCKETS – RELIABLE, EFFICIENT,  
BUILT TO PERFORM. HELPING THE MINING INDUSTRY  
OPTIMISE THEIR LOAD AND HAUL OPERATIONS



# BARRACUDA T2

## INNOVATIVE TWO-PIECE DESIGN

ENGINEERED FOR PRODUCTIVITY AND LESS MAINTENANCE, THE BARRACUDA T2 HAS A MODULAR DESIGN WITH A REPLACEABLE LOWER SHELL FOR EASY, COST-EFFECTIVE REPAIRS.

## REPLACEABLE LOWER SHELL

ENABLES FULL UTILIZATION BEFORE CONTROLLED REPLACEMENT, MINIMIZING HOT WORKS AND DOWNTIME.

REDUCES OR ELIMINATES WEAR PACKAGE MAINTENANCE, MINIMIZING ON-SITE HOT WORKS AND ENHANCING SAFETY.

MINIMISES DOWNTIME FOR WEAR PACKAGE MAINTENANCE AND MAXIMISES MACHINE AVAILABILITY WHILST LOWERING COSTS.

## REUSABLE STRUCTURE

DESIGNED FOR MULTIPLE LIFE CYCLES WITH A ROBUST UPPER STRUCTURE, REPLACEABLE LIP AND WINGS, MAXIMISING RETURN ON INVESTMENT OF MAJOR STRUCTURAL COMPONENTS.

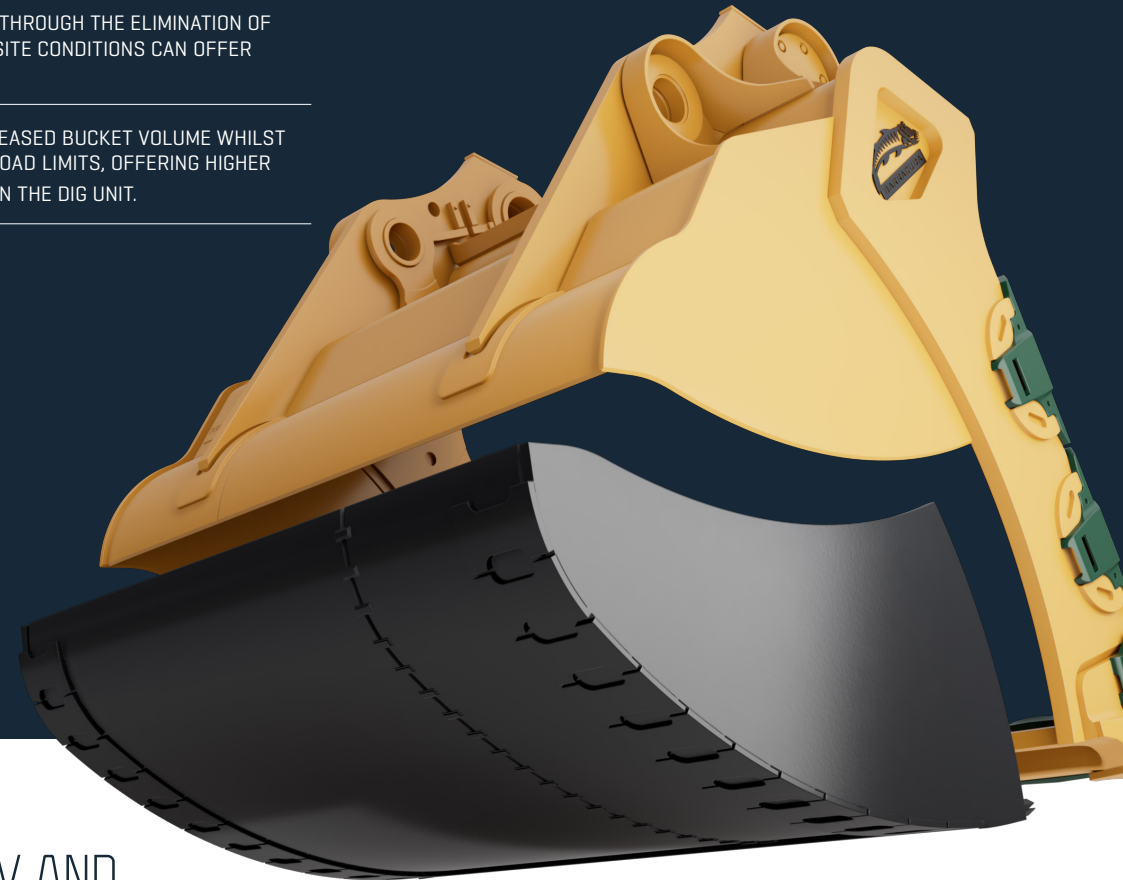
ABILITY TO EXTEND OVERALL SERVICE LIFE OF ASSET.

## ENHANCED PAYLOAD CAPACITY

OPTIMISATION OF BUCKET WEIGHT THROUGH THE ELIMINATION OF WEAR PARTS AND TAILORING FOR SITE CONDITIONS CAN OFFER LOWER OVERALL WEIGHT.

LOWER WEIGHT ALLOWS FOR INCREASED BUCKET VOLUME WHILST REMAINING WITHIN THE MACHINE LOAD LIMITS, OFFERING HIGHER MATERIAL HANDLING EFFICIENCY ON THE DIG UNIT.

ENGINEERED FOR SUPERIOR PAYLOAD PRODUCTIVITY AND REDUCED ON-SITE MAINTENANCE. FEATURING AN INNOVATIVE DESIGN WITH A REPLACEABLE LOWER SHELL.



# CONTENTS

## EXCAVATORS

CAT	CAT 6040	01
	CAT 6040-T2	02
	CAT 6060-T2	03
HITACHI	HITACHI EX1200	04
	HITACHI EX2600	05
	HITACHI EX3600	06
	HITACHI EX3600-T2	08
	HITACHI EX5600-T2	09
KOMATSU	KOMATSU PC1250	10
	KOMATSU PC2000	11
LIEBHERR	LIEBHERR R9250-T2	12
	LIEBHERR R9400-T2	13

## WHEEL LOADERS

CAT	CAT 992K	14
	CAT 994K & 995	15
KOMATSU	KOMATSU WA900	16
	KOMATSU WA1200	17

# CAT 6040



## KEY FEATURES

---

1 100% HIGH STRENGTH STEEL CONSTRUCTION INCLUDING 25MM Q&T 450 SHELL

---

HEAVY DUTY WEAR PACKAGE INCLUDING:

---

2 Q&T 450 OR OVERLAY INTERNAL WEAR LINERS

---

3 Q&T 450 OR OVERLAY EXTERNAL WEAR LINERS

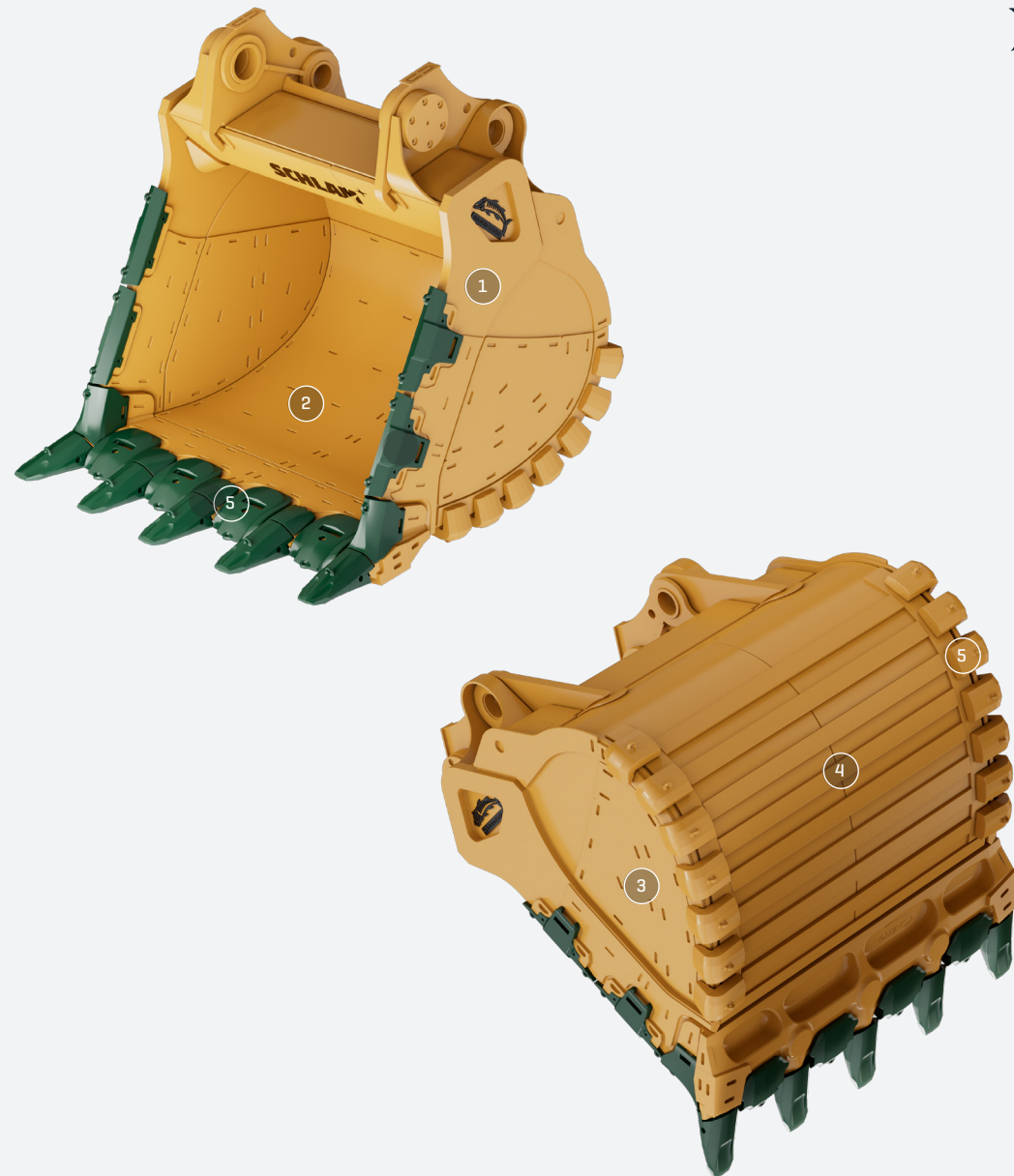
---

4 Q&T 450 UNDERSIDE WEAR STRIPS

---

5 CUSTOMER SELECTED LIP & GROUND ENGAGING TOOLS

---

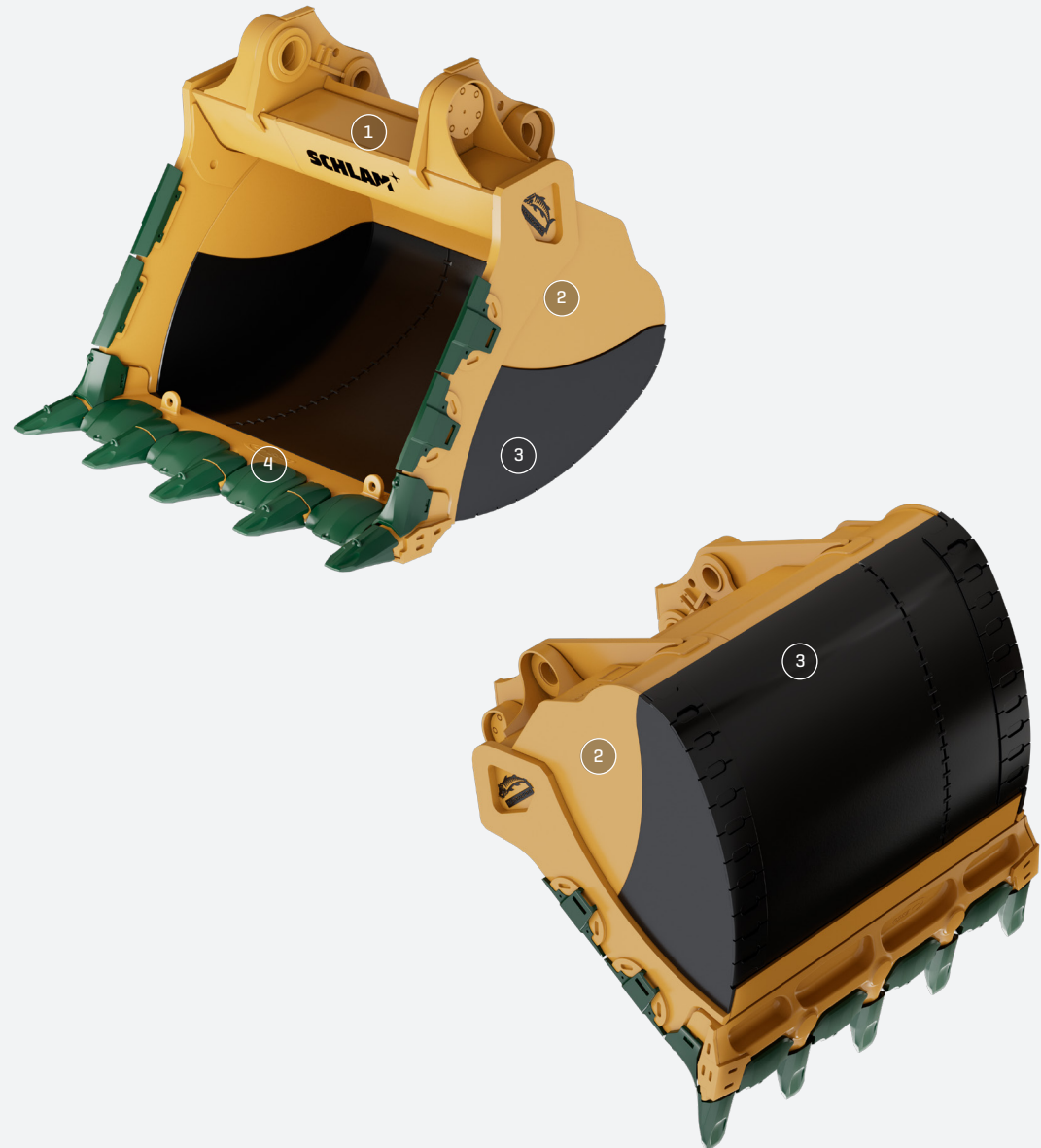




# CAT 6040-T2

## KEY FEATURES

- |   |  |
|---|--|
| 1 | 100% HIGH STRENGTH STEEL CONSTRUCTION FOR OPTIMISED WEIGHT AND SERVICE LIFE                                    |
| 2 | UPPER REUSABLE SECTION INCLUDING LIP, ROUTERS, UPPER SIDEWALLS, UPPER SHELL AND UPPER STRUCTURE / CONNECTIONS  |
| 3 | LOWER REPLACEABLE SECTION INCLUDING 40MM Q&T 450 LOWER SHELL AND SIDEWALLS, AND HARDOX 500 TUF WEAR PROTECTION |
| 4 | CUSTOMER SELECTED LIP & GROUND ENGAGING TOOLS  |

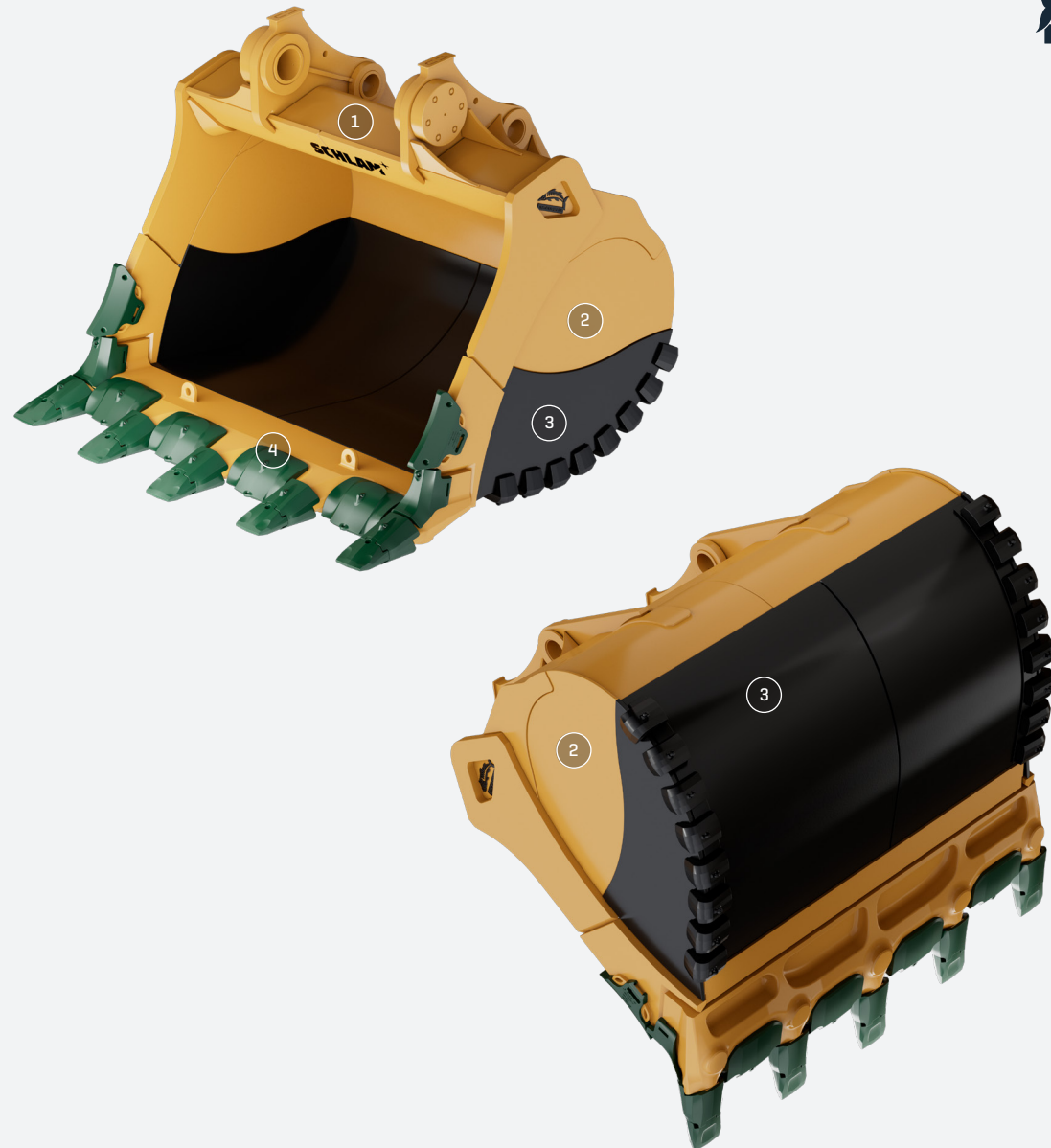




# CAT 6060-T2

## KEY FEATURES

- |   |  |
|---|--|
| 1 | 100% HIGH STRENGTH STEEL CONSTRUCTION FOR OPTIMISED WEIGHT AND SERVICE LIFE                                    |
| 2 | UPPER REUSABLE SECTION INCLUDING LIP, ROUTERS, UPPER SIDEWALLS, UPPER SHELL AND UPPER STRUCTURE / CONNECTIONS  |
| 3 | LOWER REPLACEABLE SECTION INCLUDING 40MM Q&T 450 LOWER SHELL AND SIDEWALLS, AND HARDOX 500 TUF WEAR PROTECTION |
| 4 | CUSTOMER SELECTED LIP & GROUND ENGAGING TOOLS  |



# HITACHI EX1200



## KEY FEATURES

1	100% HIGH STRENGTH STEEL CONSTRUCTION INCLUDING 16MM Q&T 450 SHELL
---	--

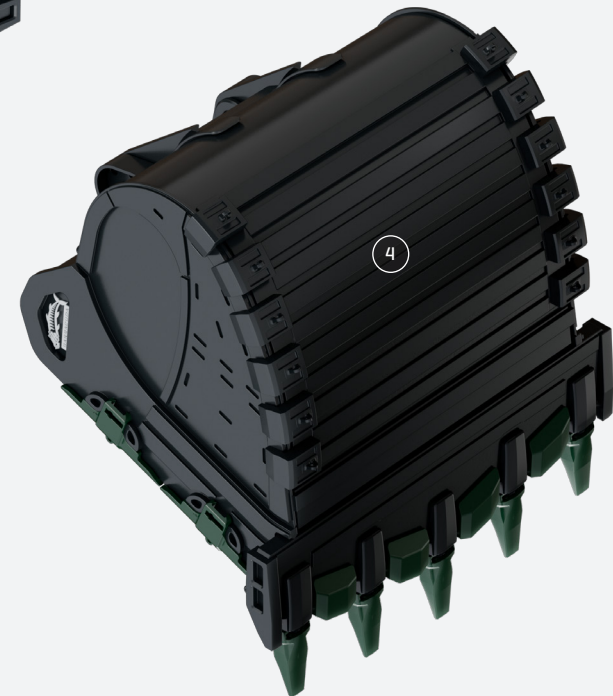
### HEAVY DUTY WEAR PACKAGE INCLUDING:

2	Q&T 450 OR OVERLAY INTERNAL WEAR LINERS
---	---

3	Q&T 450 OR OVERLAY EXTERNAL WEAR LINERS
---	---

4	Q&T 450 UNDERSIDE WEAR STRIPS
---	-------------------------------

5	CUSTOMER SELECTED LIP & GROUND ENGAGING TOOLS
---	---



# HITACHI EX2600



## KEY FEATURES

- |   |  |
|---|--|
| 1 | 100% HIGH STRENGTH STEEL CONSTRUCTION            |
| 2 | Q&T 450 OR 25MM HARDOX 500 TUF SHELL & SIDEWALLS |
| 3 | Q&T 450 OR HARDOX 500 TUF UNDERSIDE WEAR STRIPS  |
| 4 | CUSTOMER SELECTED LIP & GROUND ENGAGING TOOLS    |

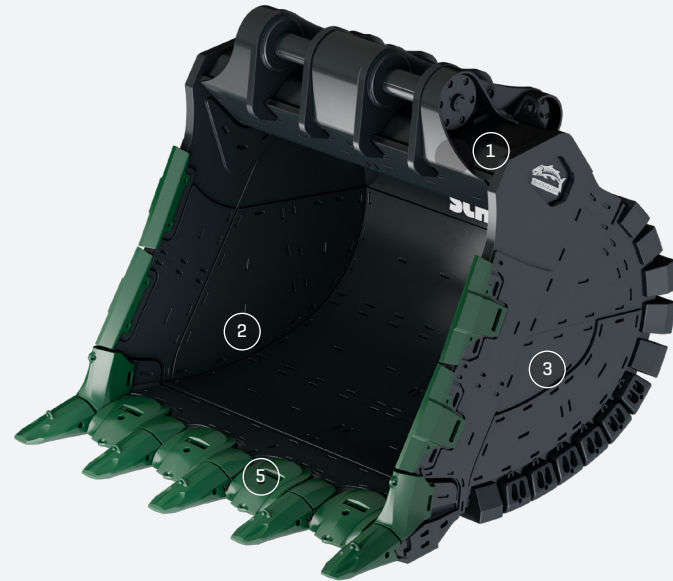


# HITACHI EX3600



## KEY FEATURES

1	100% HIGH STRENGTH STEEL CONSTRUCTION
HEAVY DUTY WEAR PACKAGE INCLUDING:	
2	Q&T 450 OR OVERLAY INTERNAL WEAR LINERS
3	Q&T 450 OR OVERLAY EXTERNAL WEAR LINERS
4	Q&T 450 UNDERSIDE WEAR STRIPS
5	CUSTOMER SELECTED LIP & GROUND ENGAGING TOOLS



# HITACHI EX3600



## KEY FEATURES

1 100% HIGH STRENGTH STEEL CONSTRUCTION INCLUDING 25MM Q&T 450 SHELL

HEAVY DUTY WEAR PACKAGE INCLUDING:

2 Q&T 450 OR OVERLAY INTERNAL WEAR LINERS

3 Q&T 450 OR OVERLAY EXTERNAL WEAR LINERS

4 Q&T 450 UNDERSIDE WEAR STRIPS

5 CUSTOMER SELECTED LIP & GROUND ENGAGING TOOLS

6 LIGHTWEIGHT PIN CAPS AND TOP HAT BUSH OPTIONS





# HITACHI EX3600-T2

## KEY FEATURES

- |   |   |
|---|---|
| 1 | 100% HIGH STRENGTH STEEL CONSTRUCTION FOR OPTIMISED WEIGHT AND SERVICE LIFE                                   |
| 2 | UPPER REUSABLE SECTION INCLUDING LIP, ROUTERS, UPPER SIDEWALLS, UPPER SHELL AND UPPER STRUCTURE / CONNECTIONS |
| 3 | LOWER REPLACEABLE SECTION INCLUDING 40MM Q&T 450 LOWER SHELL AND SIDEWALLS                                    |
| 4 | CUSTOMER SELECTED LIP & GROUND ENGAGING TOOLS   |
| 5 | LIGHTWEIGHT PIN CAPS AND TOP HAT BUSH OPTIONS   |



# HITACHI EX5600-T2



## KEY FEATURES

- |   |   |
|---|---|
| 1 | 100% HIGH STRENGTH STEEL CONSTRUCTION FOR OPTIMISED WEIGHT AND SERVICE LIFE                                   |
| 2 | UPPER REUSABLE SECTION INCLUDING LIP, ROUTERS, UPPER SIDEWALLS, UPPER SHELL AND UPPER STRUCTURE / CONNECTIONS |
| 3 | LOWER REPLACEABLE SECTION INCLUDING 50MM Q&T 450 LOWER SHELL AND 32MM Q&T 450 SIDEWALLS                       |
| 4 | CUSTOMER SELECTED LIP & GROUND ENGAGING TOOLS   |
| 5 | LIGHTWEIGHT PIN CAPS AND TOP HAT BUSH OPTIONS   |



# KOMATSU PCI250



## KEY FEATURES

---

1 100% HIGH STRENGTH STEEL CONSTRUCTION INCLUDING 16MM Q&T 450 SHELL

---

HEAVY DUTY WEAR PACKAGE INCLUDING:

---

2 Q&T 450 OR OVERLAY INTERNAL WEAR LINERS

---

3 Q&T 450 OR OVERLAY EXTERNAL WEAR LINERS

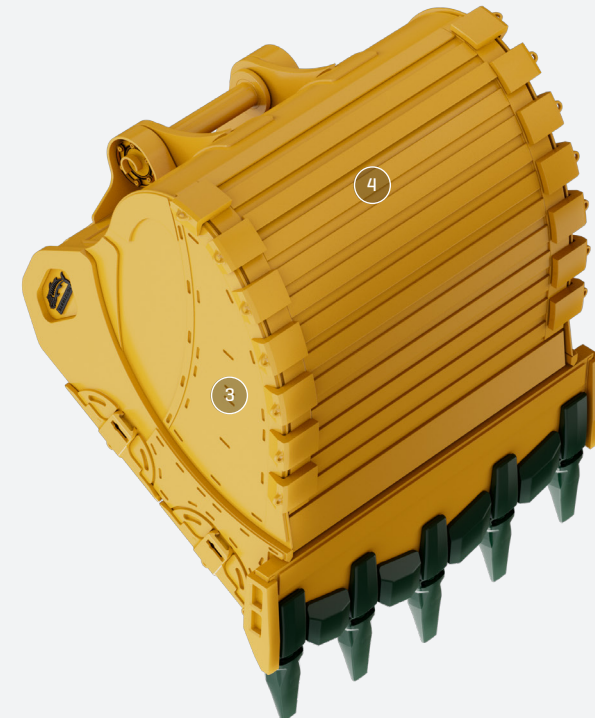
---

4 Q&T 450 UNDERSIDE WEAR STRIPS

---

5 CUSTOMER SELECTED LIP & GROUND ENGAGING TOOLS

---



# KOMATSU PC2000



## KEY FEATURES

1	100% HIGH STRENGTH STEEL CONSTRUCTION INCLUDING 16MM Q&T 450 SHELL
---	--

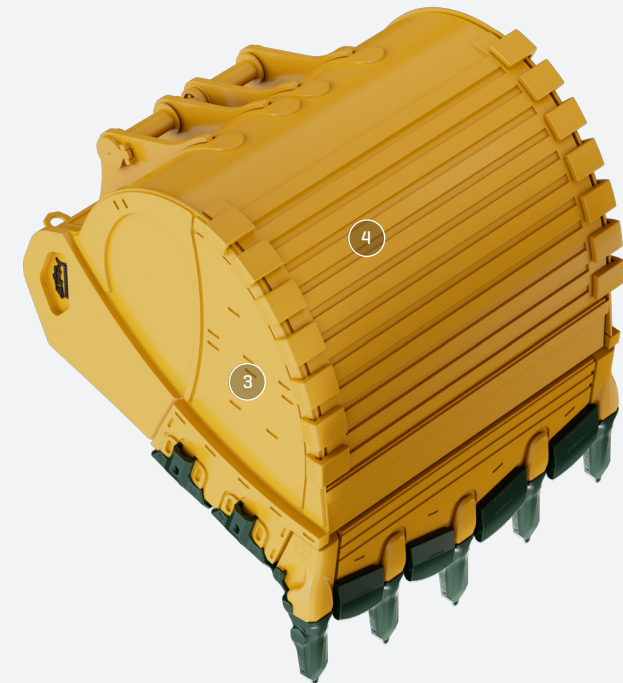
HEAVY DUTY WEAR PACKAGE INCLUDING:

2	Q&T 450 OR OVERLAY INTERNAL WEAR LINERS
---	---

3	Q&T 450 OR OVERLAY EXTERNAL WEAR LINERS
---	---

4	Q&T 450/500 UNDERSIDE WEAR STRIPS
---	-----------------------------------

5	CUSTOMER SELECTED LIP & GROUND ENGAGING TOOLS
---	---

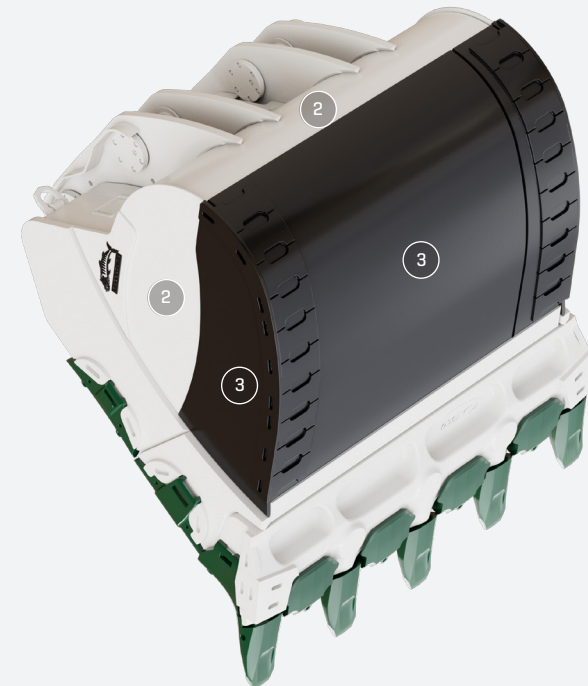
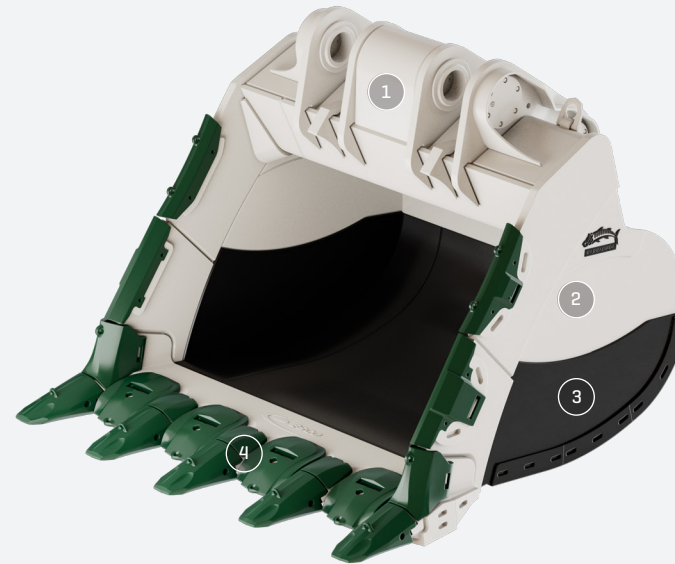


# LIEBHERR R9250-T2



## KEY FEATURES

- |   |  |
|---|--|
| 1 | 100% HIGH STRENGTH STEEL CONSTRUCTION FOR OPTIMISED WEIGHT AND SERVICE LIFE  |
| 2 | UPPER REUSABLE SECTION INCLUDING LIP, ROUTERS, UPPER SIDEWALLS, UPPER SHELL AND UPPER STRUCTURE / CONNECTIONS            |
| 3 | LOWER REPLACEABLE SECTION INCLUDING 40MM Q&T 450 LOWER SHELL, 32MM Q&T 450 SIDEWALLS, AND HARDOX 500 TUF WEAR PROTECTION |
| 4 | CUSTOMER SELECTED LIP & GROUND ENGAGING TOOLS  |

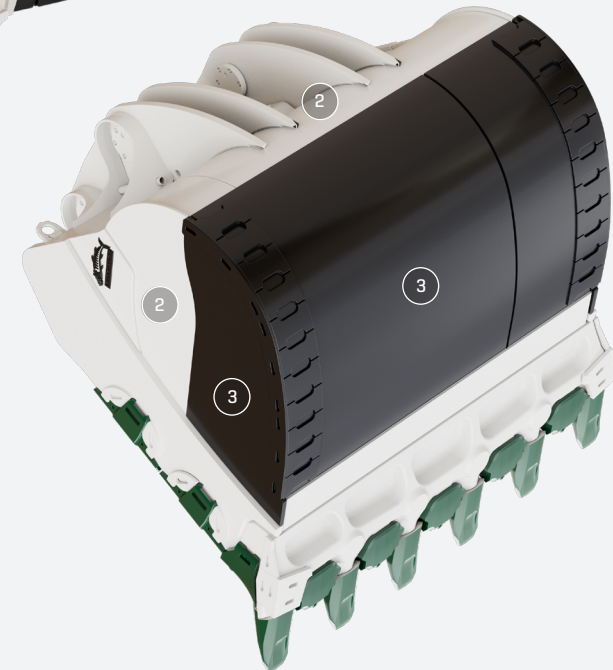




# LIEBHERR R9400-T2

## KEY FEATURES

- |   |  |
|---|--|
| 1 | 100% HIGH STRENGTH STEEL CONSTRUCTION FOR OPTIMISED WEIGHT AND SERVICE LIFE  |
| 2 | UPPER REUSABLE SECTION INCLUDING LIP, ROUTERS, UPPER SIDEWALLS, UPPER SHELL AND UPPER STRUCTURE / CONNECTIONS            |
| 3 | LOWER REPLACEABLE SECTION INCLUDING 40MM Q&T 450 LOWER SHELL, 32MM Q&T 450 SIDEWALLS, AND HARDOX 500 TUF WEAR PROTECTION |
| 4 | CUSTOMER SELECTED LIP & GROUND ENGAGING TOOLS  |



# CAT 992K

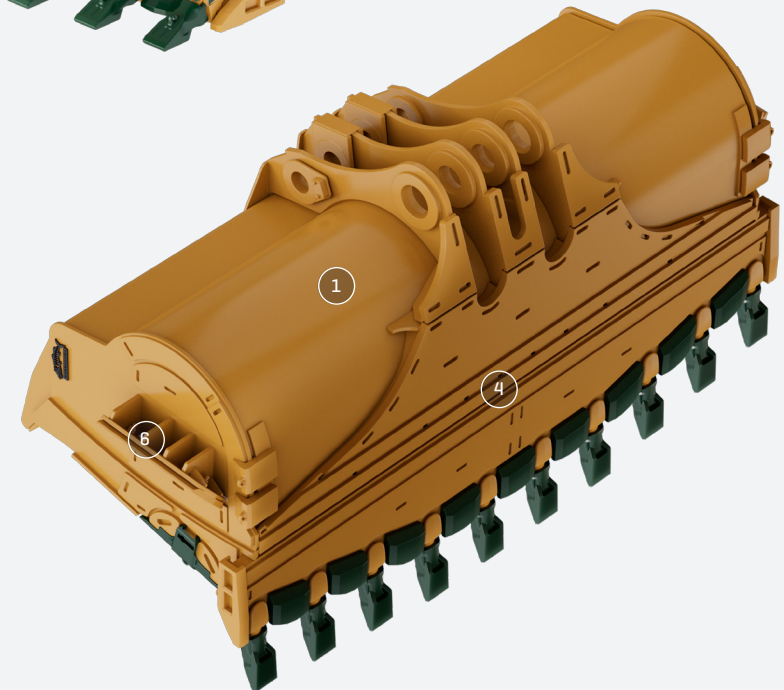
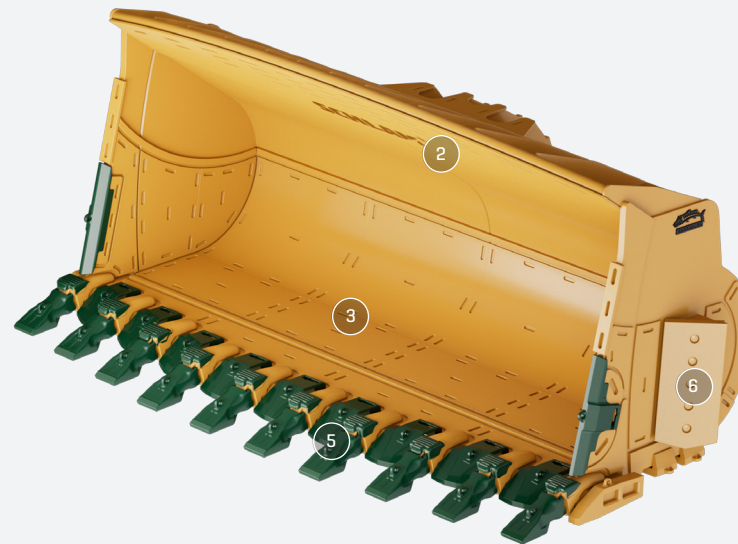


## KEY FEATURES

- 1 100% HIGH STRENGTH STEEL CONSTRUCTION
- 2 CURVED SPILL GUARD FOR OPTIMAL VISIBILITY AND LOADING

### WEAR PACKAGE INCLUDING:

- 3 Q&T 450 WEAR LINERS
- 4 Q&T 450 UNDERSIDE WEAR PROTECTION
- 5 CUSTOMER SELECTED LIP & GROUND ENGAGING TOOLS
- 6 ROCK DEFLECTORS



# CAT 994K & 995



## KEY FEATURES

1 100% HIGH STRENGTH STEEL CONSTRUCTION INCLUDING 25MM Q&T 450 SHELL

2 CURVED SPILL GUARD FOR OPTIMAL VISIBILITY AND LOADING

### WEAR PACKAGE INCLUDING:

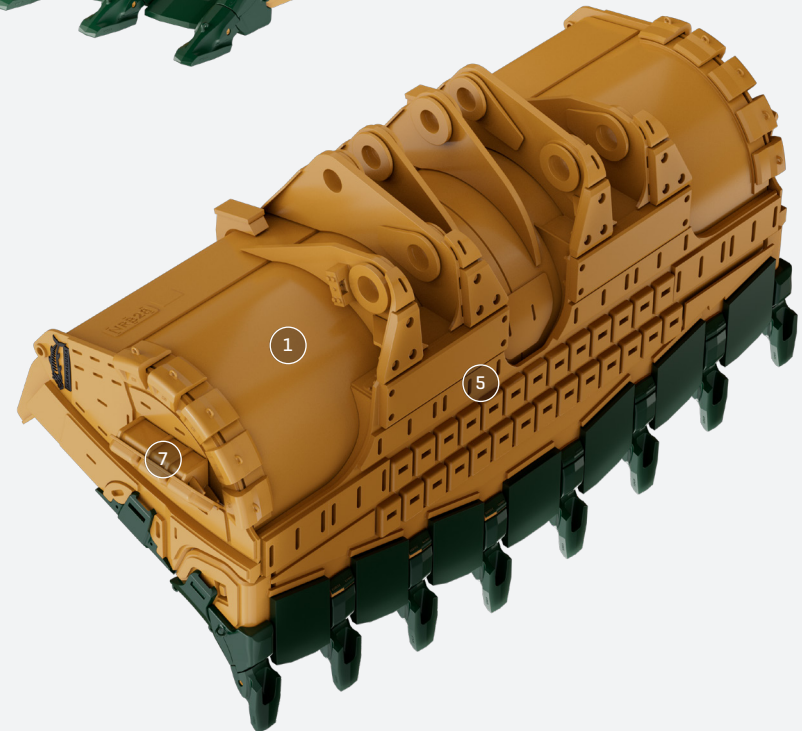
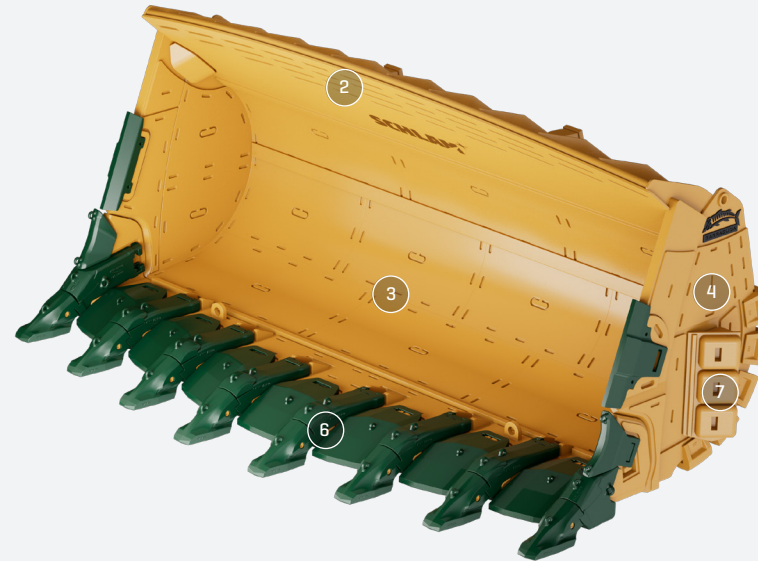
3 Q&T 450 INTERNAL WEAR LINERS

4 Q&T 450 SIDE WEAR PLATES

5 Q&T 450 BASE PLATE

6 CUSTOMER SELECTED LIP & GROUND ENGAGING TOOLS

7 ROCK DEFLECTORS



# KOMATSU WA900

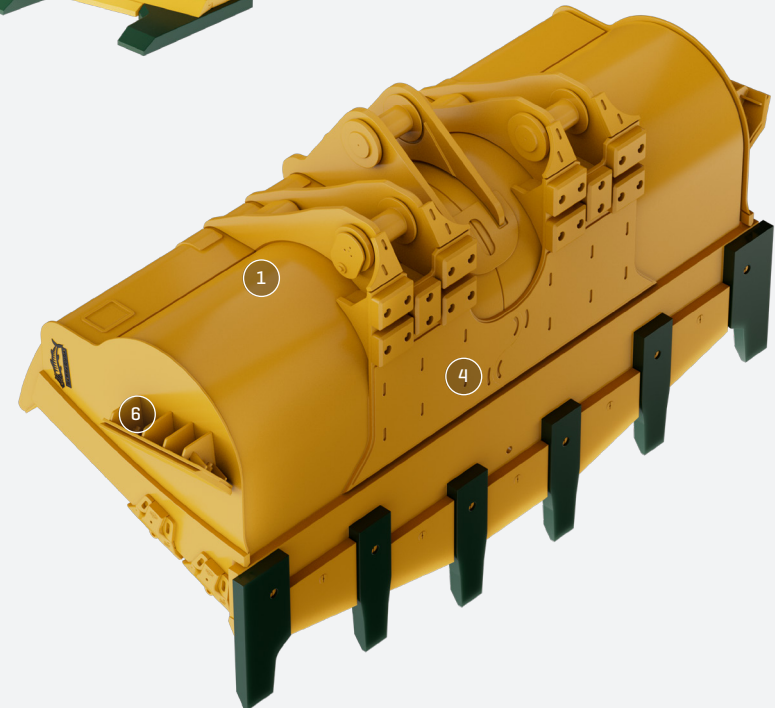


## KEY FEATURES

- 1 100% HIGH STRENGTH STEEL CONSTRUCTION
- 2 CURVED SPILL GUARD FOR OPTIMAL VISIBILITY AND LOADING

### WEAR PACKAGE INCLUDING:

- 3 Q&T 450 WEAR LINERS
- 4 Q&T 450 UNDERSIDE WEAR PLATES
- 5 CUSTOMER SELECTED LIP & GROUND ENGAGING TOOLS
- 6 ROCK DEFLECTORS



# KOMATSU WA1200

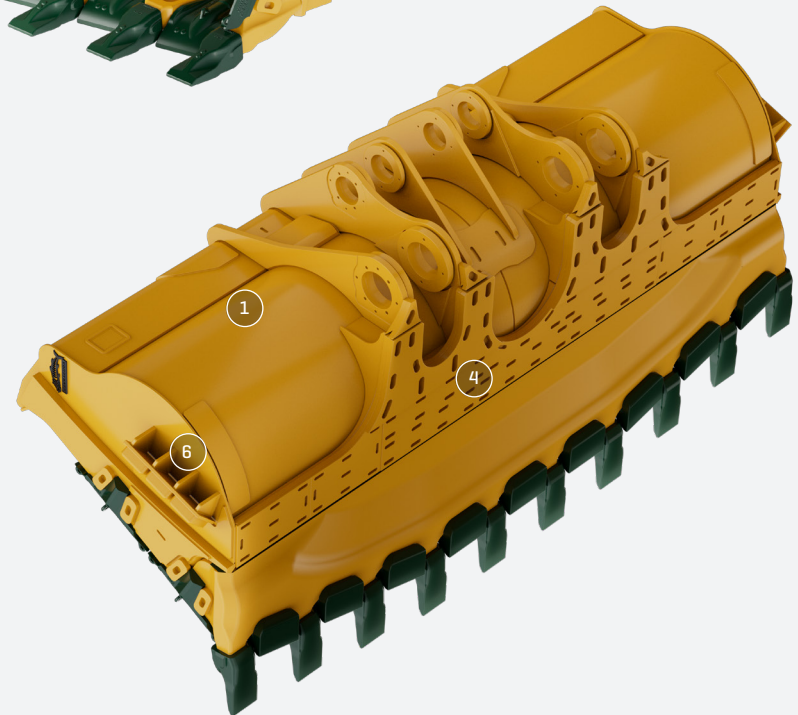


## KEY FEATURES

- 1 100% HIGH STRENGTH STEEL CONSTRUCTION
- 2 CURVED SPILL GUARD FOR OPTIMAL VISIBILITY AND LOADING

### WEAR PACKAGE INCLUDING:

- 3 Q&T 450 WEAR LINERS
- 4 Q&T 450 UNDERSIDE WEAR PLATES
- 5 CUSTOMER SELECTED LIP & GROUND ENGAGING TOOLS
- 6 ROCK DEFLECTORS



# GLOBAL LEADERSHIP

## WHAT SETS US APART

AT SCHLAM, WE GO BEYOND SUPPLYING MINING ATTACHMENTS—WE ENGINEER SOLUTIONS THAT TRANSFORM OPERATIONS FOR LEADING MINING COMPANIES THE WORLD OVER.

## INNOVATION-DRIVEN DESIGN

OUR PRODUCTS ARE BUILT ON CUTTING-EDGE DESIGN PRINCIPLES, ENSURING MAXIMUM EFFICIENCY, DURABILITY, AND PERFORMANCE IN THE TOUGHEST MINING CONDITIONS.

## DEEP MINING EXPERTISE

WITH AN INTIMATE KNOWLEDGE OF MINING PROCESSES, EQUIPMENT, AND OPERATIONAL CHALLENGES, WE DEVELOP SOLUTIONS THAT DIRECTLY ADDRESS THE REAL DEMANDS OF YOUR SITE.

## TAILORED TO YOUR NEEDS

NO TWO OPERATIONS ARE THE SAME, AND NEITHER ARE OUR PRODUCTS. OUR CUSTOMISATION CAPABILITIES MEAN WE DESIGN AND MANUFACTURE SOLUTIONS THAT ALIGN PERFECTLY WITH YOUR SPECIFIC REQUIREMENTS.

## COMPLETE LOAD & HAUL SOLUTIONS

WE CAN PROVIDE A FULLY INTEGRATED PACKAGE THAT OPTIMISES THE COMBINED PERFORMANCE OF TRUCK BEDS AND BUCKETS, DELIVERING A SEAMLESS LOAD AND HAUL OPERATION.

## WORLD-CLASS MANUFACTURING EXCELLENCE

OUR LEAN MANUFACTURING PROCESSES ENSURE SHORT LEAD TIMES, SUPERIOR PRODUCT QUALITY, AND AN EFFICIENT, PRODUCTION PROCESS—ALL WHILE SUPPORTING LOCAL JOBS.



AT SCHLAM, WE DON'T JUST BUILD PRODUCTS—WE BUILD SMARTER, MORE EFFICIENT MINING OPERATIONS.

# PRODUCT LIFECYCLE CARE

## PRODUCT LIFECYCLE CARE

AT SCHLAM, OUR SUPPORT GOES BEYOND SUPPLYING INDUSTRY-LEADING MINING ATTACHMENTS — WE'RE WITH YOU EVERY STEP OF THE WAY TO ENSURE THE CONTINUAL PERFORMANCE OF YOUR MINING ATTACHMENTS.

## ON-SITE MONITORING & SUPPORT

OUR TEAM WORKS CLOSELY WITH OUR CLIENTS TO TRACK PERFORMANCE AND PROVIDE EXPERT SUPPORT, ENSURING MAXIMUM EFFICIENCY AND RELIABILITY.

## IN-HOUSE PARTS SUPPLY

WITH OUR OWN PRODUCTION FACILITIES, WE MANUFACTURE AND DELIVER HIGH-QUALITY REPLACEMENT PARTS TO KEEP YOUR EQUIPMENT RUNNING.

## QUALITY REPAIRS & REFURBISHMENT

OUR OFF-SITE FACILITIES SPECIALIZE IN SAFE, EFFICIENT, AND HIGH-QUALITY REPAIRS TO EXTEND THE LIFE OF YOUR ASSETS.



SCHLAM PROVIDES END-TO-END SUPPORT TO KEEP YOUR MINING ATTACHMENTS PERFORMING AT THEIR BEST

# KEY CUSTOMER PARTNERSHIPS

SCHLAM IS THE GLOBAL LEADER IN LOAD AND HAUL ATTACHMENTS, TRUSTED BY MAJOR MINING COMPANIES AND EQUIPMENT SUPPLIERS THE WORLD OVER TO DELIVER INNOVATIVE SOLUTIONS THAT MAXIMIZE OPERATIONAL PERFORMANCE.



**SCHLAM**





## ABOUT SCHLAM

Headquartered in Perth, Western Australia and Tucson, Arizona, two of the world's most extensive and intensive hard rock mining regions, Schlam is a mining services business with a very specific focus – load and haul equipment.

We produce the world's best mining truck beds and mining buckets for all hard rock mining environments, we support them with the very best product life-cycle care in the industry.

The result is an unmatched track record in productivity gains, reducing downtime and minimising maintenance. This is why we are the partner of choice for many of the world's biggest mining companies.

# SPEAK TO OUR PAYLOAD TEAM TODAY

## AUSTRALIA

PHONE +61 8 6148 5555  
ADDRESS 435 DUNDAS ROAD  
FORRESTFILED WA 6058  
EMAIL PAYLOAD@SCHLAM.COM

## AMERICAS

PHONE +1 (801) 999-8852  
ADDRESS 1 SOUTH CHURCH AVENUE  
TUCSON AZ 85701  
EMAIL AMERICAS@SCHLAM.COM

## REST OF WORLD

PHONE +61 8 6148 5555  
EMAIL PAYLOAD@SCHLAM.COM

[schlam.com](http://schlam.com)